

# 6.46SH



Maximum lifting height: 45.60 m  
Maximum reach: 32.00 m  
Electronically controlled hydrostatic transmission  
Automatic levelling device  
Scissors stabilizers

## RTH 6.46 SH

MACHINE MODEL	Rotary telescopic handler	RTH 6.46 SH	
	Maximum lifting capacity	6,000 kg (center of gravity 600 mm)	
	Maximum lifting height	45.6 m	
	Rotation	360° (continuous)	
ENGINE	Type	Mercedes OM 934 LA Stage IV	Mercedes OM 904 LA Stage IIIA
	Rated Power	170 kW - 231 HP @ 2,000 rpm	145 kW - 196 HP @ 2,200 rpm
	Maximum torque	900 Nm @ 1,200-1,600 rpm	705 Nm @ 1,200-1,600 rpm
	Displacement	5,13 l	4,8 l
	Cylinders	4 in line	4 in line
	Fuel	Diesel direct injection turbocharged	Diesel direct injection turbocharged
	Cooling System	Water - intercooler	Water - intercooler
TRANSMISSION	Type	Hydrostatic	
	Model	Bosch - Rexroth	
	Maximum pressure	500 bar	
	Displacement	Variable displacement pump electronically controlled. Variable displacement motor	
	Gearbox	2 speeds forward-reverse	
AXLES AND BRAKES	Type	Axles with epicyclic reduction gear	
	Rear axle	Oscillating and steering with hydraulic locking	
	Front axle	Oscillating and steering with automatic levelling +/- 10°	
	Service brake	Hydraulically activated, oil-immersed multi-disc type on each axle	
	Parking brake	Hydraulic with negative action	
	Tyre sizes	17.5 R 25	
PERFORMANCE	Max. travel speed	25 km/h	
	Drawbar pull	121 kN	
	Gradeability	30%	
	Turning circle (at forks)	7,710 mm	
WEIGHTS	Total unladen	30,600 kg	
	Front axle unladen (boom retracted and lowered)	15,300 kg	
	Rear axle unladen (boom retracted and lowered)	15,300 kg	
TANK AND SYSTEM CAPACITIES	Diesel fuel tank	280 l	280 l
	AdBlue	40 l	N/A
	Hydraulic fluid	250 l	250 l
	Engine oil	20.5 l	16 l
	Coolant	36 l	36 l
HYDRAULIC CIRCUIT FOR MOVEMENTS	Max. working pressure	350 bar	
	Circuit type	Load sensing	
	Service pump	Bosch Rexroth - Variable displacement	
	Distributor for boom and turret movements	Danfoss - Electroproportional valve SIL 2	
	Distributor for stabilisers	Bosch Rexroth - Electro-hydraulics controls	
	Movements control	2 joystick Danfoss with two shafts with dead man safety device Management with CAN bus technology	
STANDARDS MET	EN 13849: concerning the safety of all machine controls EN 13000: concerning standards for hydraulic cranes EN 280: concerning standards for mobile elevating work platforms FOPS/ROPS EU 2016/1628: concerning engine emissions standards EN 1459-2: concerning standards for slewing variable-reach trucks		

The data in this brochure are informative and subject to change without notice

18C1399 - EN

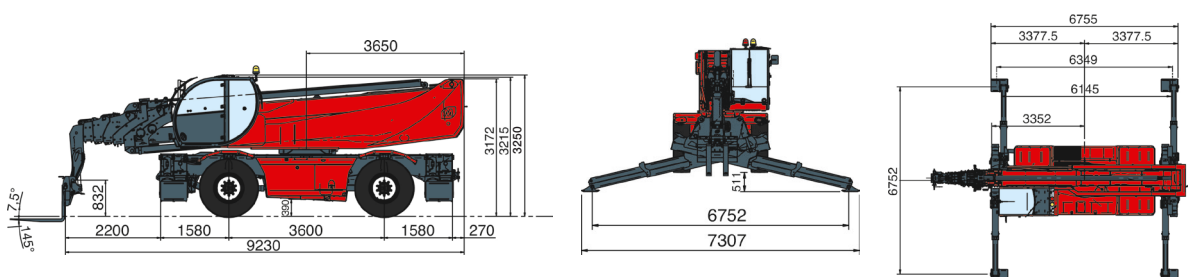
### MAIN SECTORS



CONSTRUCTION INDUSTRY



FEATURED PROJECTS



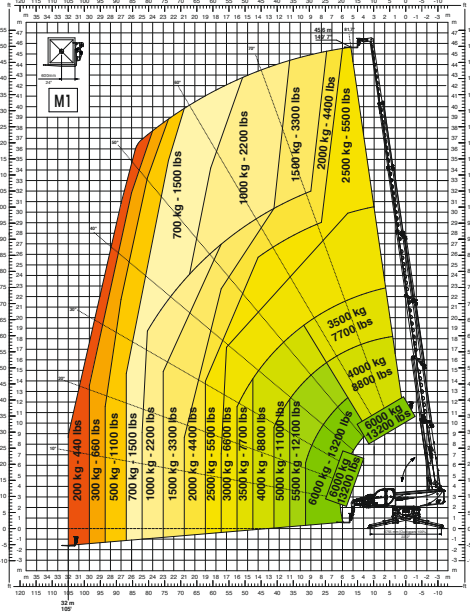
**Magni Telescopic Handlers srl**

Via Magellano, 22 - 41013 Castelfranco Emilia, Modena, Italia - Tel: +39 059 8630811 - Fax: +39 059 8638012  
 commerciale@magnith.com - www.magnith.com

**360° LOAD CHART  
ON FULLY EXTENDED STABILISERS**

**M1**

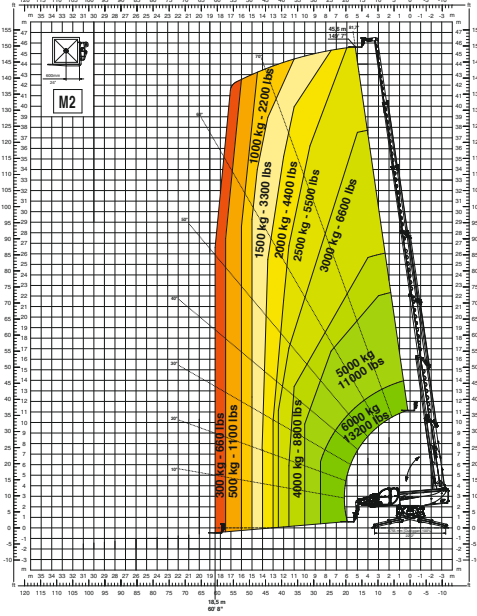
**ON STABILISERS - M1**



**360° LOAD CHART  
ON FULLY EXTENDED STABILISERS**

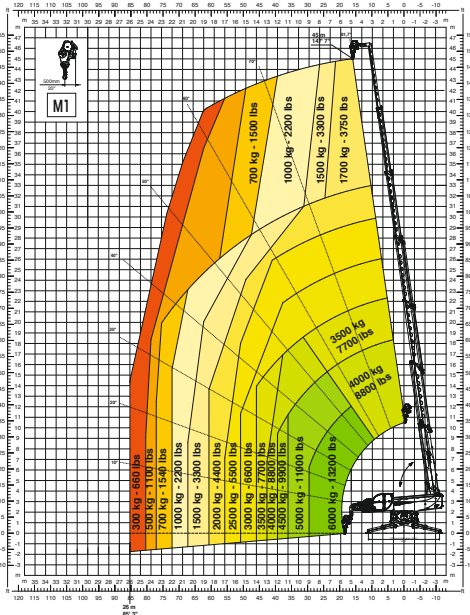
**M2**

**ON STABILISERS - M2**



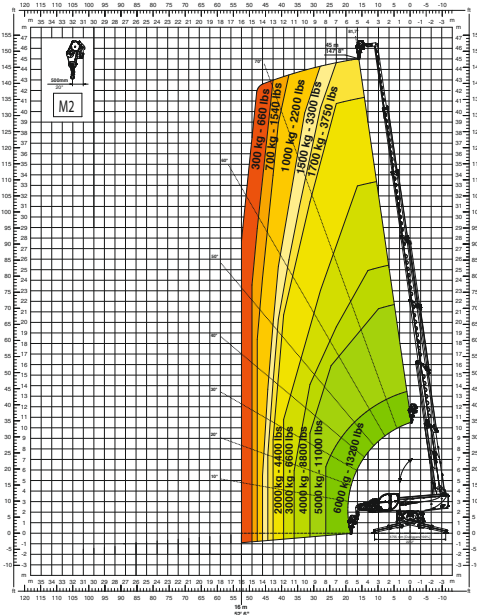
**WINCH 6,000 kg - M1**

**W6 - M1**



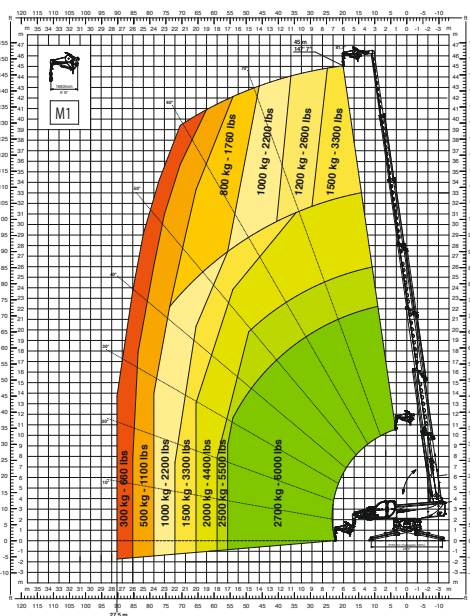
**WINCH 6,000 kg - M2**

**W6 - M2**



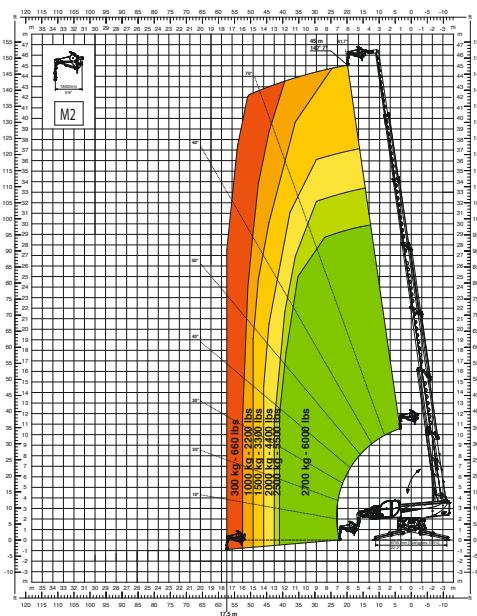
**JIB WITH WINCH 2,700 kg - M1**

**JW2700 - M1**



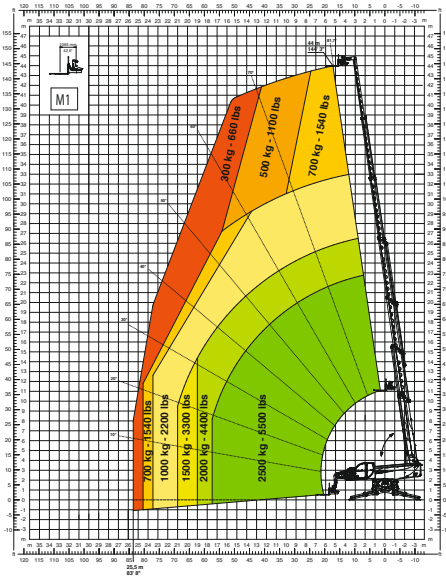
**JIB WITH WINCH 2,700 kg - M2**

**JW2700 - M2**



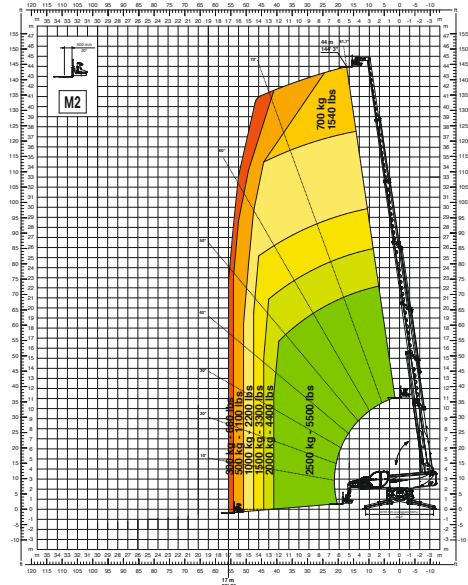
ROTATING FORKCARRIAGE **2,500 kg - M1**

RFC2,5 M1



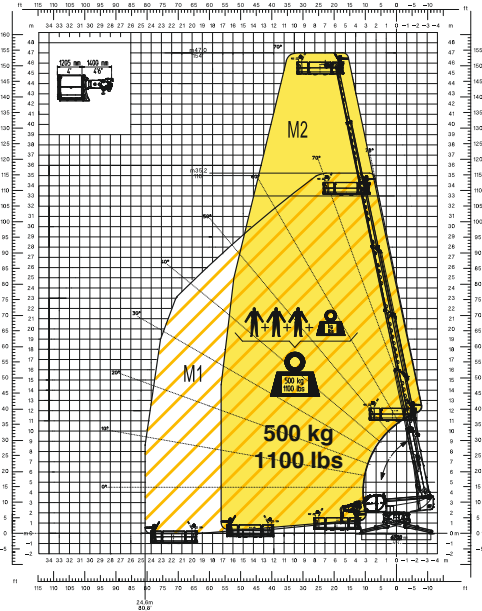
ROTATING FORKCARRIAGE **2,500 kg - M2**

RFC2,5 M2



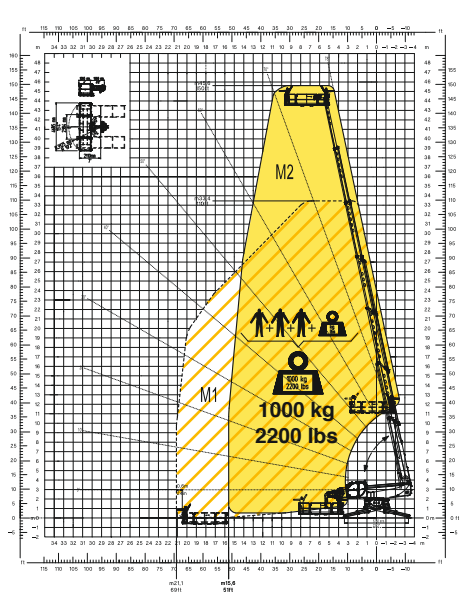
ROTATING EXTENDABLE BASKET **500 kg**

REP 2-4,5



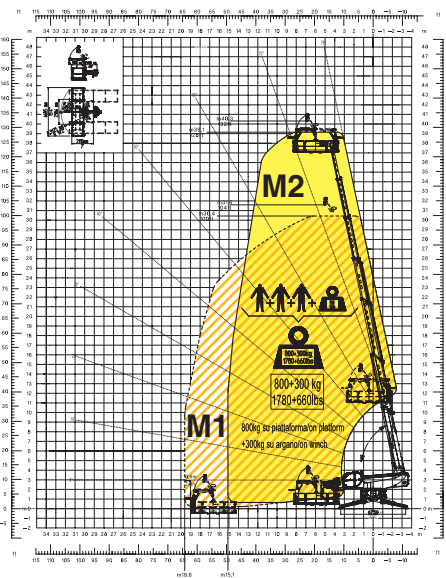
ROTATING EXTENDABLE BASKET **1,000 kg**

REP 10.2-4,7



BASKET 4,7 m **800 kg**  
WITH WINCH **300 kg**

REP 8.2-4,7 W0,3



TELESCOPIC BASKET **200 kg - 10 m**

TP 2.10

