

The data given in this brochure are provided for information purposes and are subject to change without prior notice



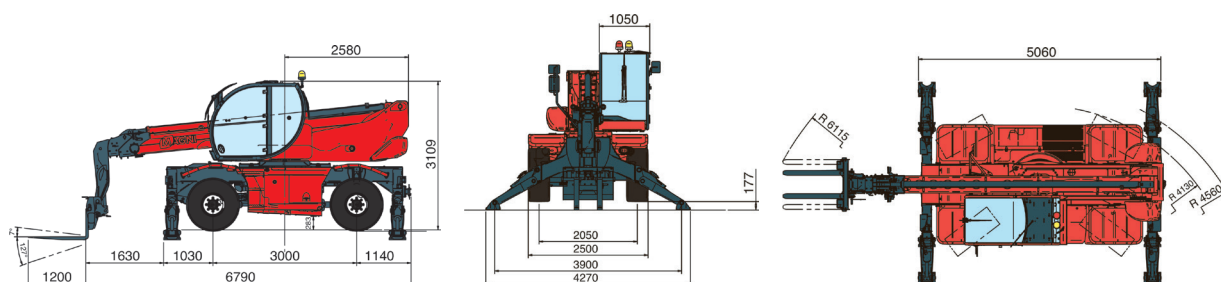
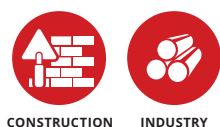
Maximum lifting height: 17.56 m
Maximum reach: 14.25 m
Electronically controlled hydrostatic transmission
Automatic levelling device
Pivoting stabilisers

RTH 4.18 SMART

MACHINE MODEL	Rotary telescopic handler	RTH 4.18 SMART	
	Maximum lifting capacity	4,000 kg (centre of gravity 500 mm)	
	Maximum lifting height	17.56 m	
	Rotation	400° (limited)	
ENGINE	Type	Deutz TCD 3.6 L4 - Stage IV	Deutz TCD 3.6 L4 EDG - Stage IIIA compliant
	Rated Power	55.4 kW - 74 hp @ 2,200 rpm	55.4 kW - 74 hp @ 2,200 rpm
	Maximum torque	390 Nm @ 1,300 rpm	390 Nm @ 1,300 rpm
	Displacement	3.6 l	3.6 l
	Cylinders	4 in line	4 in line
	Fuel	Turbocharged direct injection diesel	Turbocharged direct injection diesel
	Cooling System	Water - intercooler	Water - intercooler
TRANSMISSION	Type	Hydrostatic	
	Model	Bosch - Rexroth	
	Maximum pressure	500 bar	
	Displacement	Electronically controlled variable displacement pump Variable displacement motor	
	Gearbox	Dropbox, 2 speeds forward-reverse	
AXLES AND BRAKES	Type	Axles with planetary gearboxes	
	Rear axle	Steering	
	Front axle	Oscillating and steering with automatic levelling, +/-10°	
	Service brake	Hydraulically operated wet multi-disk brakes on each axle	
	Parking brake	Hydraulic with negative action	
	Tyre sizes	18 R19.5 (445/65 R19.5)	
PERFORMANCE	Max. travel speed	25 km/h	
	Drawbar pull	83 kN	
	Gradeability	41%	
	Turning circle (at forks)	6,115 mm	
WEIGHTS	Total unladen	14,750 kg	
	Front axle unladen (boom retracted and lowered)	7,000 kg	
	Rear axle unladen (boom retracted and lowered)	7,750 kg	
TANK AND SYSTEM CAPACITIES	Diesel fuel tank	180 l	180 l
	AdBlue	10 l	N/A
	Hydraulic fluid	190 l	190 l
	Engine oil	8 l	8 l
	Coolant	20 l	20 l
HYDRAULIC CIRCUIT FOR MOVEMENTS	Max. working pressure	270 bar	
	Circuit type	Load sensing	
	Service pump	Gear pump	
	Distributor for boom and turret movements	Danfoss - SIL 2 electro-proportional valve	
	Distributor for stabilisers	Bosch Rexroth - Electro-hydraulic actuators	
	Movements control	2 no. two-axis Danfoss joysticks with deadman safety device - Managed via CAN bus	
STANDARDS MET	EN 13849: concerning the safety of all machine controls EN 13000: concerning standards for hydraulic cranes EN 280: concerning standards for mobile elevating work platforms FOPS/ROPS EU 2016/1628: concerning engine emissions standards EN 1459-2: concerning standards for slewing variable-reach trucks		

The data given in this brochure are provided for information purposes and are subject to change without prior notice

SECTORS OF USE

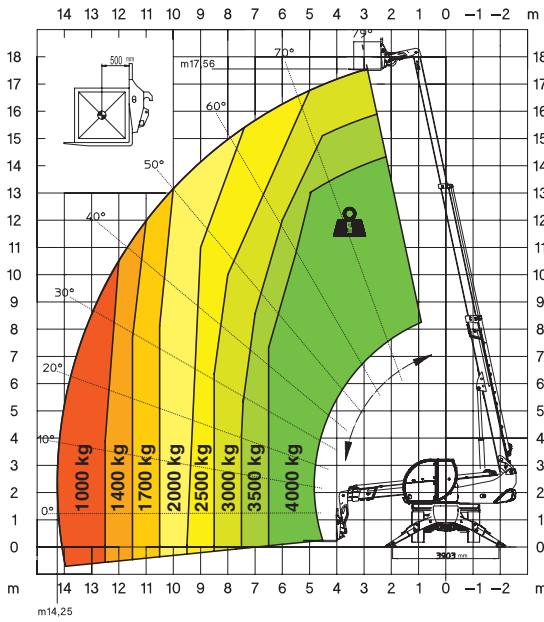


Magni Telescopic Handlers srl

Via Magellano, 22 - 41013 Castelfranco Emilia, Modena, Italia - Tel: +39 059 8630811 - Fax: +39 059 8638012
commerciale@magnith.com - www.magnith.com

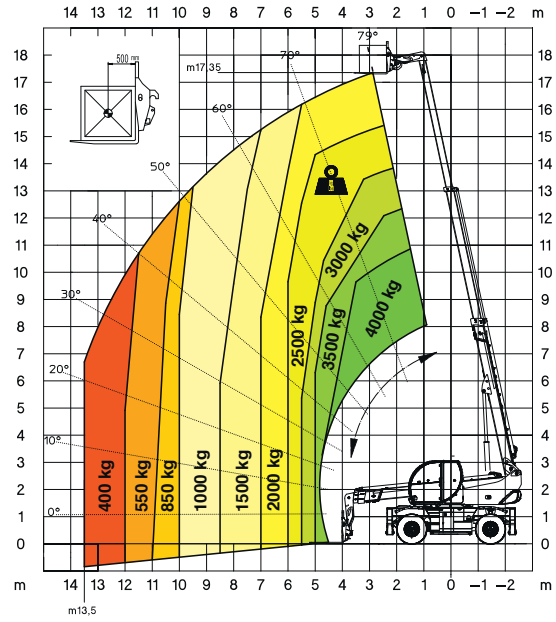
**360° LOAD CHART
ON FULLY EXTENDED STABILISERS**

ON STABILISERS



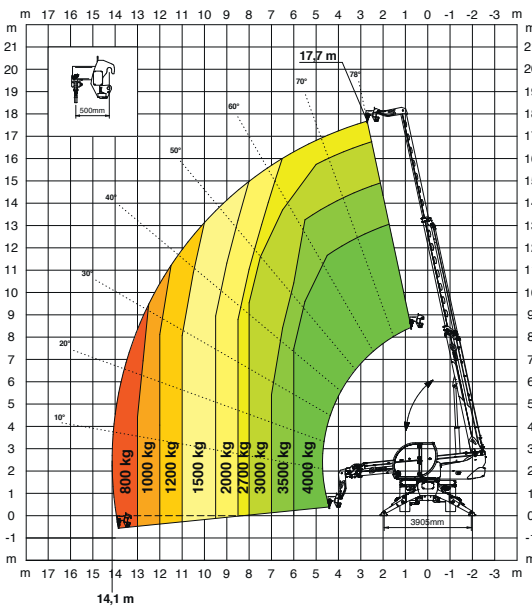
FRONT LOAD CHART ON TYRES

ON TYRES



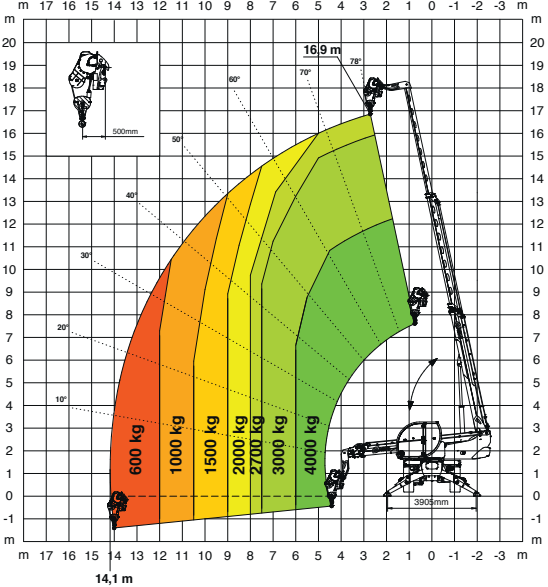
HOOK 4000 kg

H 4



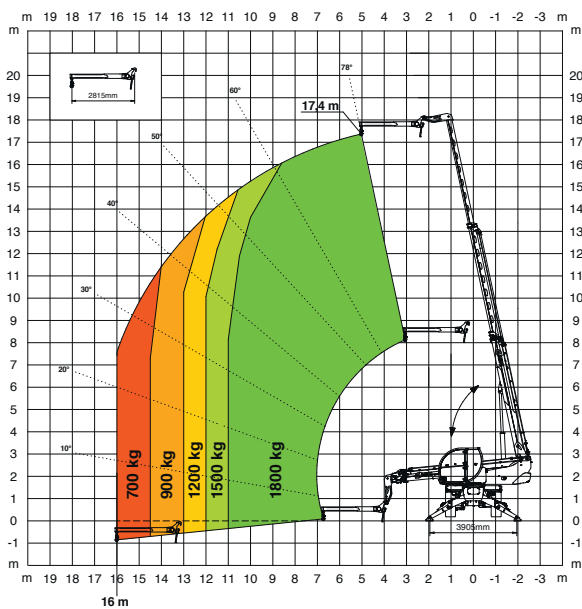
WINCH 4000 kg

W 4



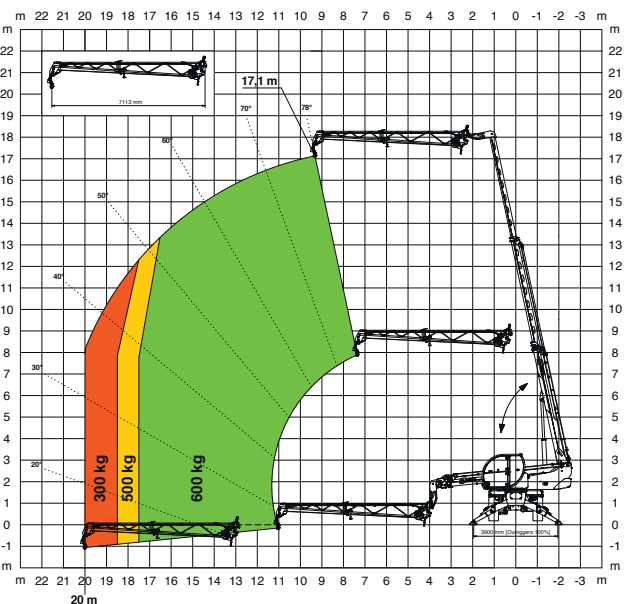
JIB 1800 kg

J 1800



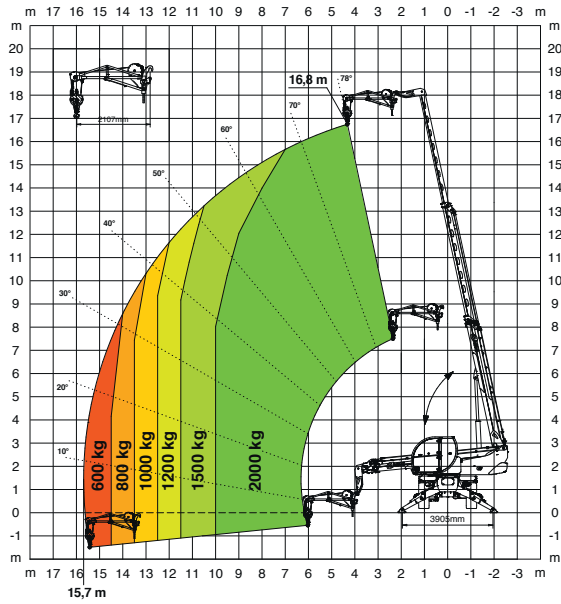
JIB WITH WINCH 600 kg

JW 600



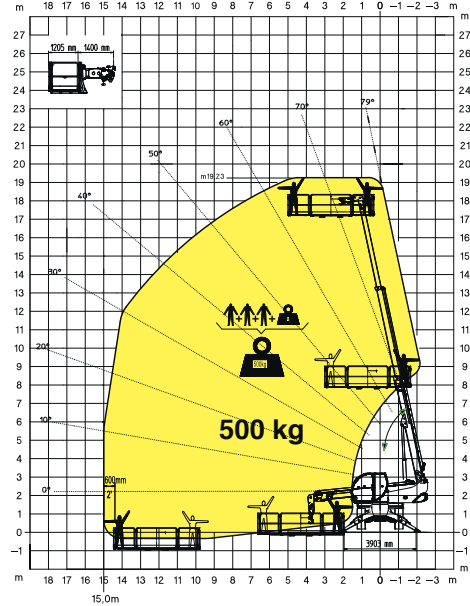
JW 2000

JIB WITH WINCH 2000 kg



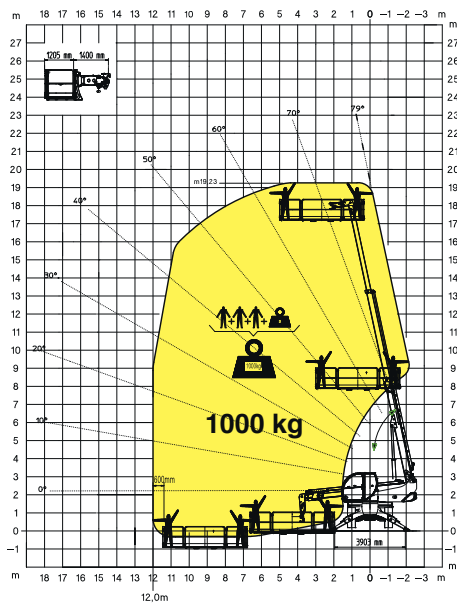
REP 2-4,5

ROTATING EXTENDABLE BASKET 500 kg



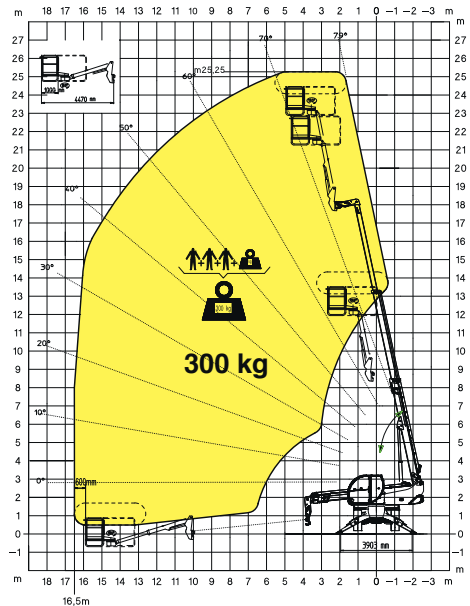
REP 10.2-4,7

ROTATING EXTENDABLE BASKET 1000 kg



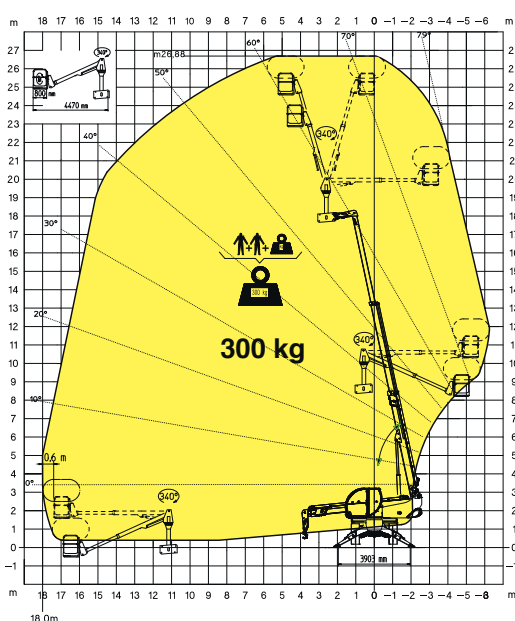
TP

TELESCOPIC PIVOTING BASKET WITH 180° ROTATION



TP O-U

TELESCOPIC PIVOTING OVER-UNDER BASKET WITH 340° ROTATION



TP O-U

TELESCOPIC PIVOTING OVER-UNDER BASKET WITH 340° ROTATION

